

**136.00-1-26**  
Simmons,  
Myrtle M.

**135.00-3-4.11**  
Leam Mountain  
Properties 2 LLC

**136.00-7-6**

**136.00-8-54**  
Bryant, Paul

**136.00-8-40.1**  
Meyer,  
Chester F.

**136.00-7-9**  
Woodin,  
David E.

**153.00-1-11.1**  
Blauners Paesanos  
Parkway LP

**152.00-2-3**  
Doring, Evan

**153.00-2-4**  
Munson,  
Portia

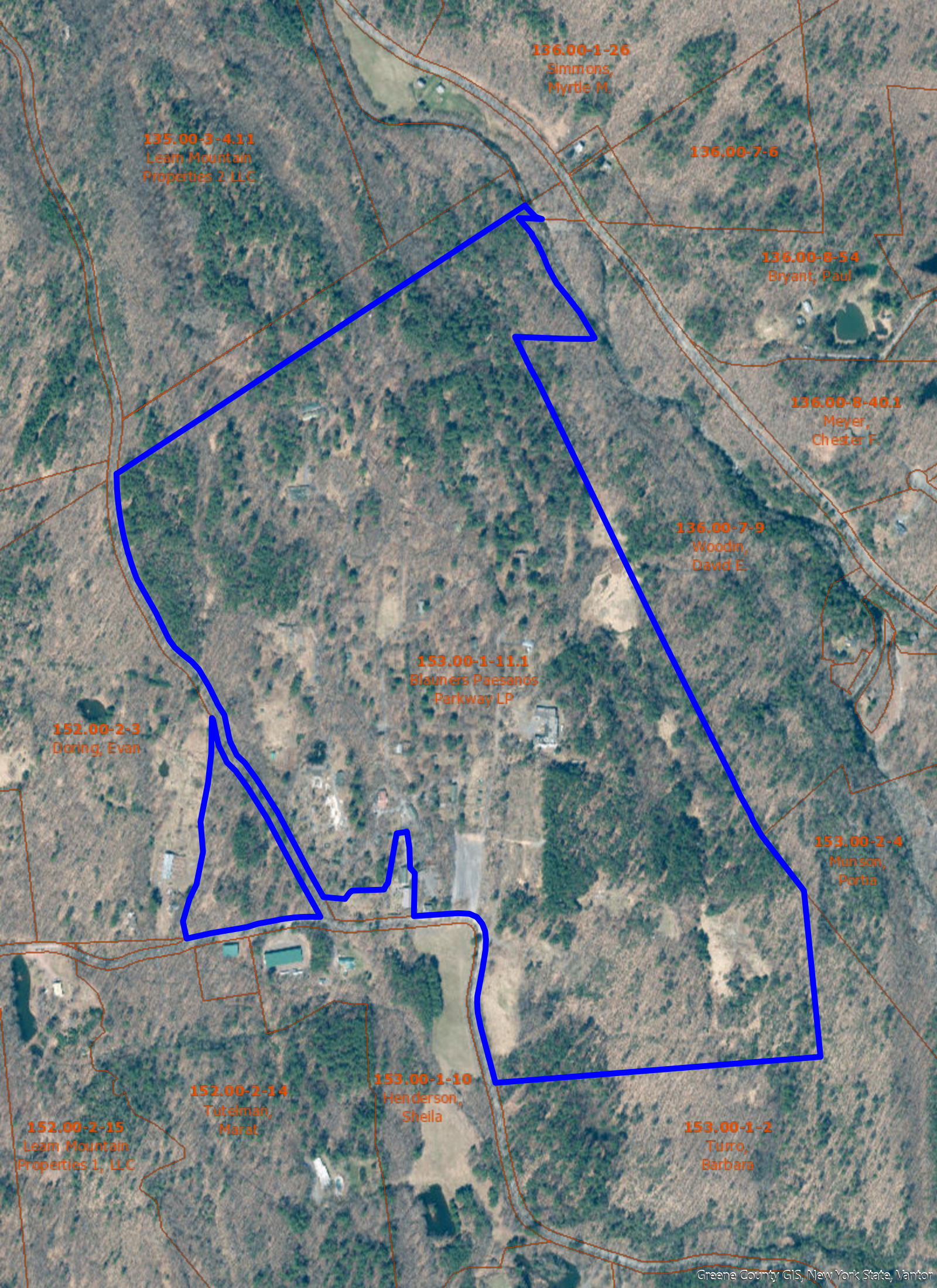
Haines Rd

**152.00-2-14**  
Tutelman,  
Marat

**153.00-1-10**  
Henderson,  
Sheila

**153.00-1-2**  
Turro,  
Barbara

**152.00-2-15**  
Leam Mountain  
Properties 1, LLC



**136.00-1-26**  
Simmons,  
Myrtle M.

**135.00-3-4.11**  
Leam Mountain  
Properties 2, LLC

**136.00-7-6**

**136.00-8-54**  
Bryant, Paul

**136.00-8-40.1**  
Meyer,  
Chester E.

**136.00-7-9**  
Woodin,  
David E.

**153.00-1-11.1**  
Blayners Paesanos  
Parkway LP

**152.00-2-3**  
Doring, Evan

**153.00-2-4**  
Munson,  
Portia

**152.00-2-14**  
Tutelman,  
Marak

**153.00-1-10**  
Henderson,  
Sheila

**153.00-1-2**  
Turro,  
Barbara

**152.00-2-15**  
Leam Mountain  
Properties 1, LLC